

MISSION HILLS CORNER RESTAURANT



▶ VIEW INSIDE SPACE

- Highly visible Corner Restaurant Location in the heart of the Mission Hills Dining District
- Location has not been on the market for almost 30 years
- Building completely remodeled less than 5 years ago
- Rare grandfathered Type 47 ABC License w/ Entertainment
- Ability to expand the patios & open up the space
- Long term lease negotiable for qualified tenant
- **Key Money:** \$450,000
(price to purchase business assets & liquor license)
- **Size:** 2,500 SF + Patio

DEMOGRAPHICS	1 mile	3 miles	5 miles
Population	21,171	186,106	487,465
Average HH Income	\$103,109	\$72,476	\$73,548
Daytime Population	19,521	168,614	273,749

*Total Cars / Day 20,436: Washington St. & Goldfinch St.

* Do not disturb tenant or speak with employees/management



**LOCATION
MATTERS** 
RESTAURANT | RETAIL | BROKERAGE

Michael Spilky

Mike.Spilky@LocationMattersInc.com
CA LIC #01469032

PH 858-792-5521 x101
FX 858-876-1822

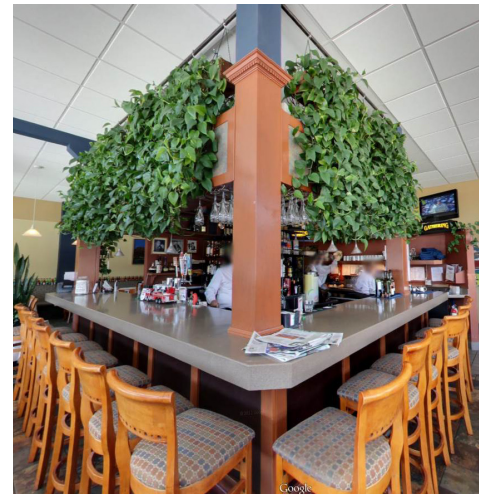
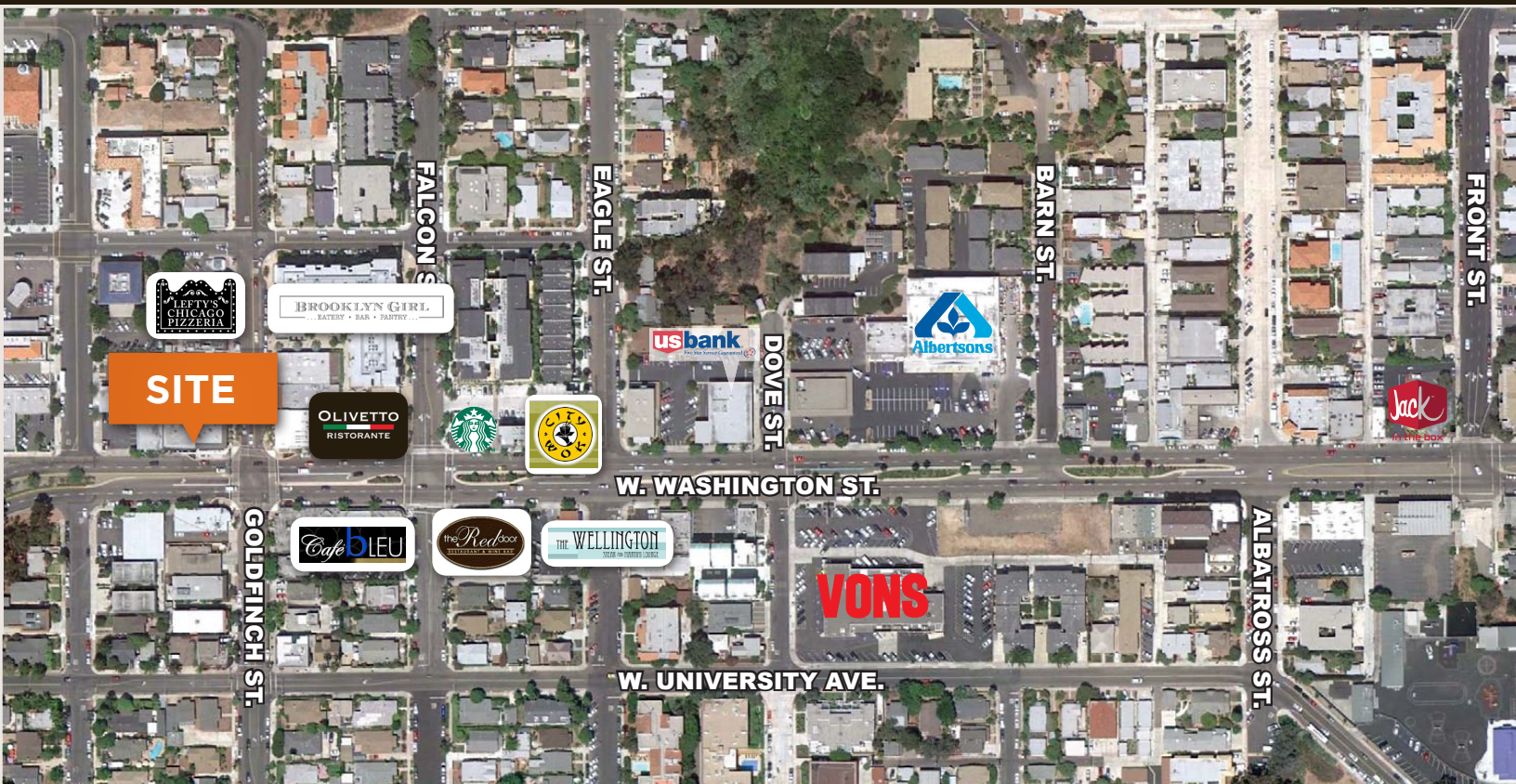
FOR MORE INFORMATION, PLEASE CONTACT US

858-792-5521

locationmattersinc.com

902 & 908 W. WASHINGTON ST., SAN DIEGO, CA 92103

FOR LEASE



**LOCATION
MATTERS** 
RESTAURANT | RETAIL | BROKERAGE

Michael Spilky

Mike.Spilky@LocationMattersInc.com

CA LIC #01469032

PH 858-792-5521 x101

FX 858-876-1822

FOR MORE INFORMATION, PLEASE CONTACT US

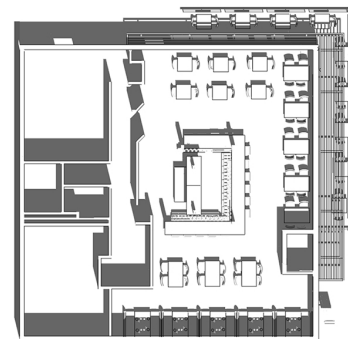
858-792-5521

locationmattersinc.com

902 & 908 W. WASHINGTON ST., SAN DIEGO, CA 92103

FOR LEASE

PROPOSED NEW STOREFRONT



**LOCATION
MATTERS** 
RESTAURANT | RETAIL | BROKERAGE

Michael Spilky

Mike.Spilky@LocationMattersInc.com
CA LIC #01469032

PH 858-792-5521 x101
FX 858-876-1822

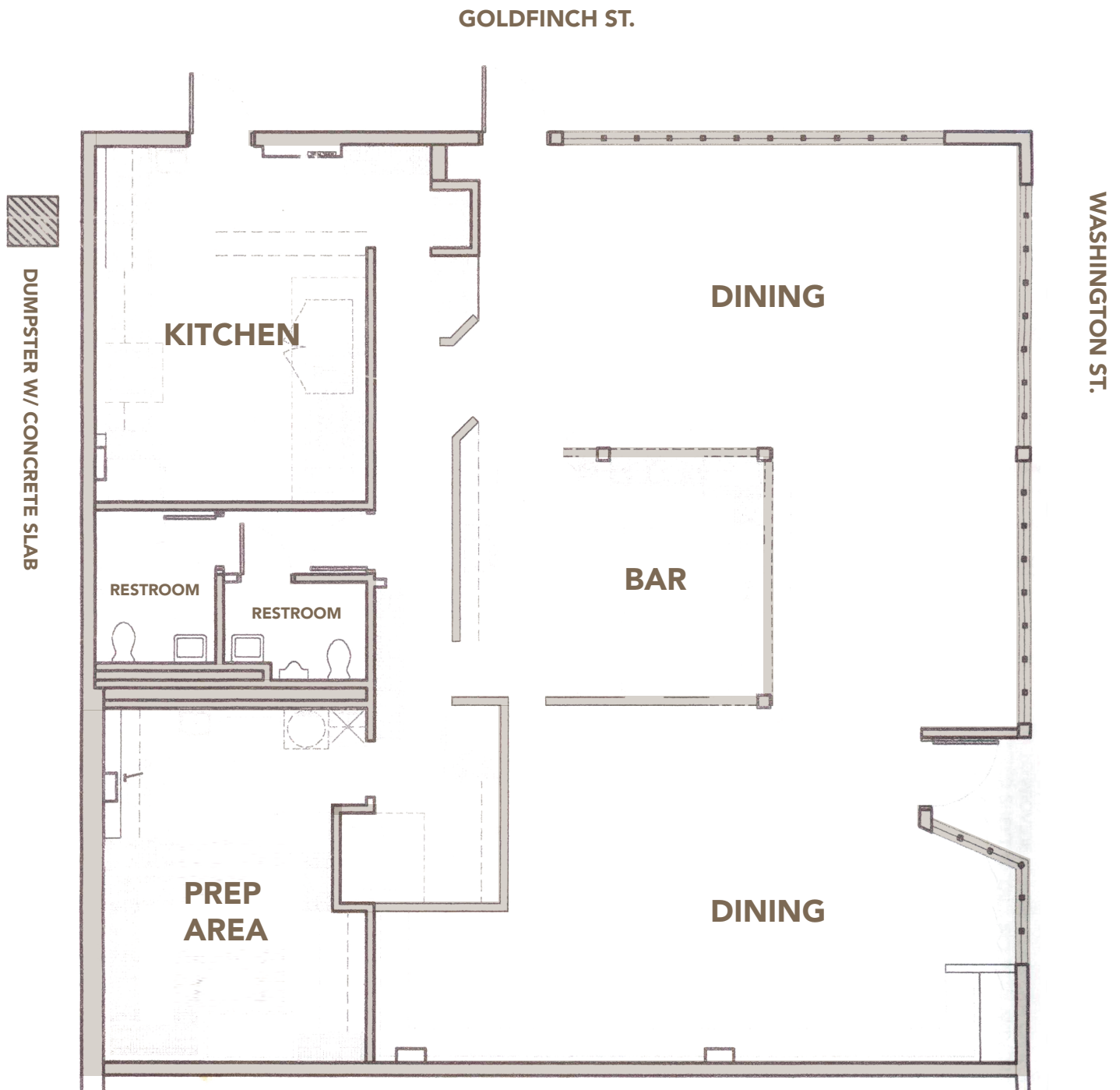
FOR MORE INFORMATION, PLEASE CONTACT US

858-792-5521

locationmattersinc.com

902 & 908 W. WASHINGTON ST., SAN DIEGO, CA 92103

FOR LEASE



Michael Spilky

Mike.Spilky@LocationMattersInc.com

CA LIC #01469032

PH 858-792-5521 x101

FX 858-876-1822

FOR MORE INFORMATION, PLEASE CONTACT US

858-792-5521

locationmattersinc.com