

# Del Sur Fixturized Restaurant Space

FOR LEASE



16475 Paseo Del Sur, Suite 105, San Diego, CA 92127 / 2,200 SF + 851 SF Patio





PRIME

# Del Sur Location



Immaculate, Fully Fixturized Restaurant  
Brand New Build-Out  
Located in Del Sur Town Center,  
Anchored by a 143,000 SF Target with  
67,000 SF of Retail  
Average Household Income of \$155,000  
Daytime Population of 31,384 within 3  
Miles

## Renowned Neighbors

**burgerlounge**  
THE ORIGINAL *grass-fed* BURGER.

**Luna**  
Grill.

RISTORANTE ITALIANO  
**PIACERE MIO**  
DEL SUR  
92127

**OTOTO**  
SUSHI CO.

**Board & Brew**

ORGANICALLY AWESOME  
**Choice**  
SUPERFOOD BAR & JUICERY  
AWESOMELY ORGANIC





# Site Plan



16475 Paseo Del Sur, Suite 105, San Diego, CA 92127

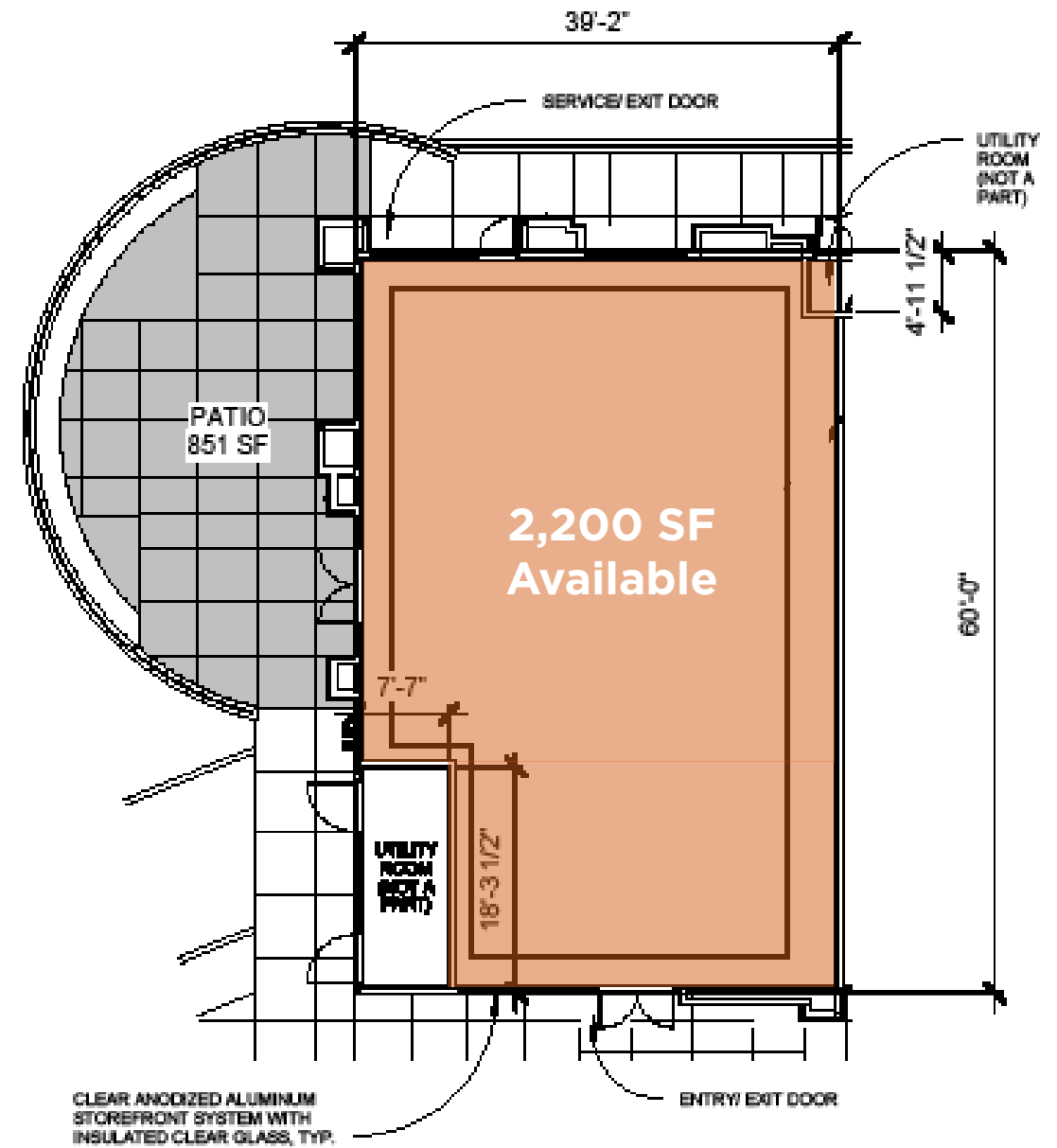




# Floor Plan



16475 Paseo Del Sur, Suite 105, San Diego, CA 92127



← Paseo Del Sur →



01



02



03



04



05



06



07



08



09



10



11



12



13



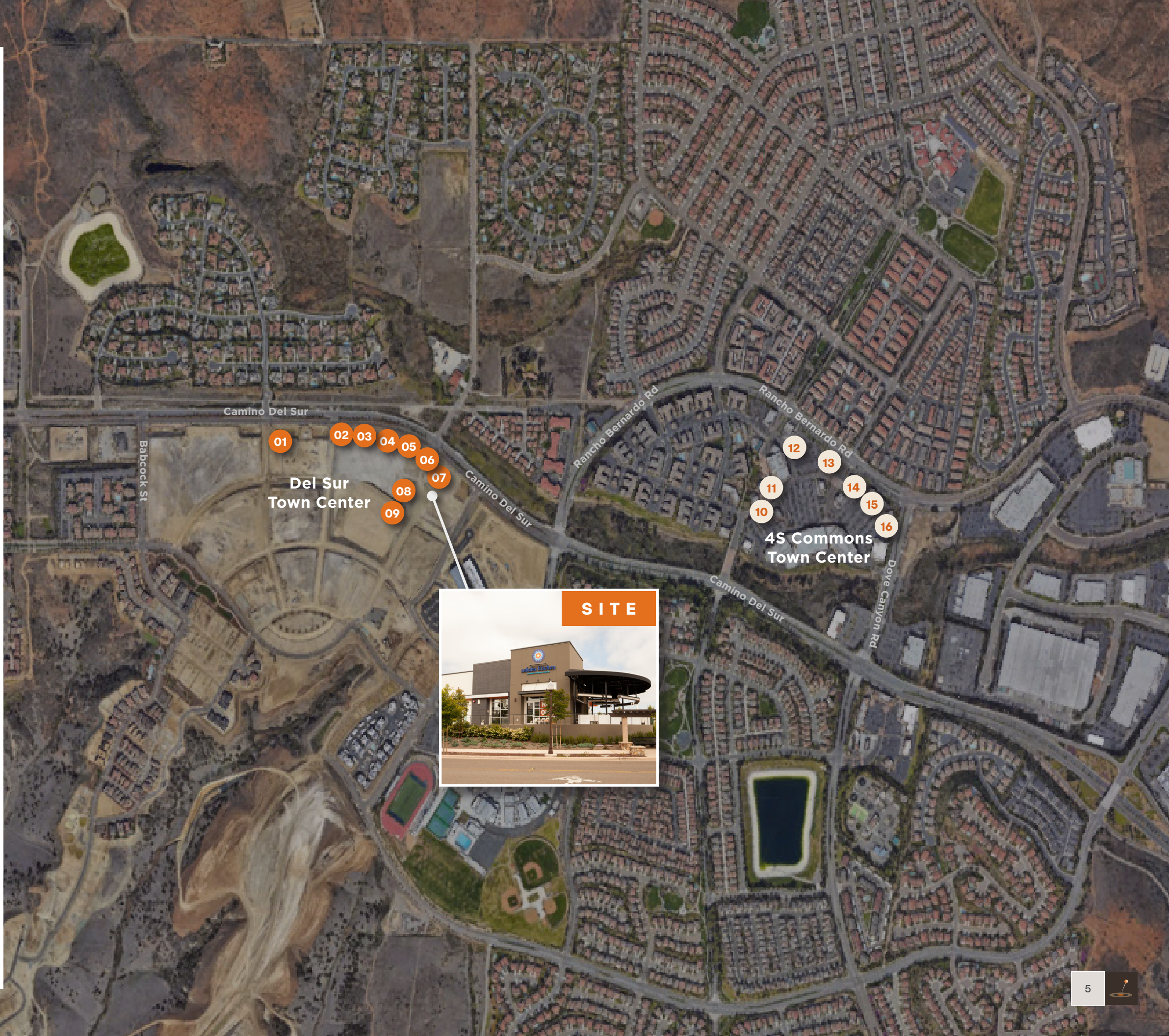
14



15



16



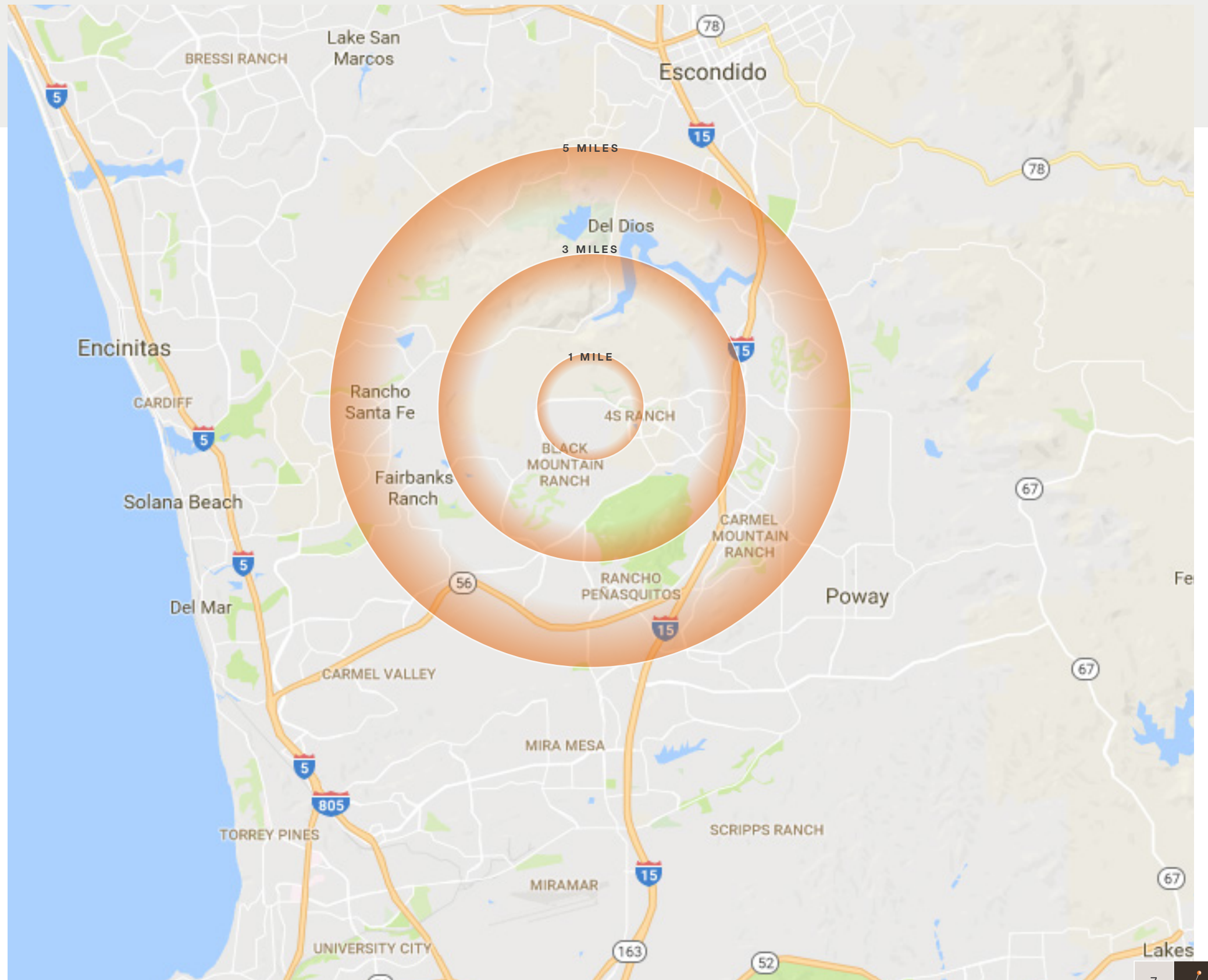


Become  
a Part of  
Del Sur  
Town Center





# Demographics



## 1 MILE

Daytime Population	9,978
Population	15,519
Average HH Income	\$167,476

## 3 MILES

Daytime Population	31,384
Population	52,872
Average HH Income	\$155,047

## 5 MILES

Daytime Population	65,898
Population	159,799
Average HH Income	\$150,813





---

# Leasing Inquiries



**Michael Spilky, President**

CA LIC #01469032

858-792-5521

[mike@locationmatters.com](mailto:mike@locationmatters.com)

**FOR LEASE**

**16475 Paseo Del Sur, Suite 105, San Diego, CA 92127**

[locationmatters.com](http://locationmatters.com)

